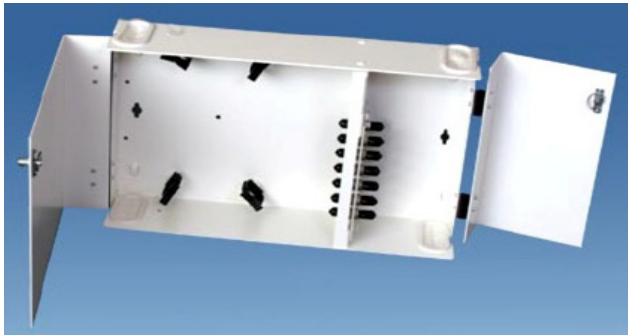




## Wall Mount Fiber Optic Distribution Unit

**BJ-2129**

### 2 Coupler Plate Wall Mount



### Features

- Terminates up to 48 fibers with LC Quad Coupler Plates
- Cable entrance and exits both top and bottom with space for splicing and storage
- Both covers remove easily and are secured with quarter turn fasteners or key locks
- Light durable aluminum construction with size ideal for small cabinets and enclosures
- Utilizes the BJ-1742E-012 Splice Tray and supports BJ-1796A-002 Cable Clamps

### Ordering Information

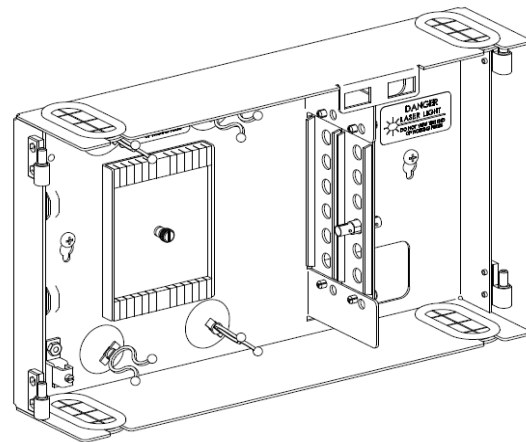
<u>Part Number</u>	<u>Description</u>
BJ-2129A-001	Wall Mount, 2 Plates, White
BJ-2129A-101	Wall Mount, 2 Plates, Black
BJ-2129B-002	Wall Mount, 2 Plates, Two Key Locks, White
BJ-2129B-102	Wall Mount, 2 Plates, Two Key Locks, Black

### Application

This compact wall mount enclosure can hold two coupler plates as well as mini splice trays. It is ideally suited for small LANs and industrial fiber applications.

### Specifications

Capacity:	Two Plates
Dimensions:	8.0" H x 13.0" W x 3.0" D
Weight:	3 lbs. 2 oz.
Construction:	Aluminum
Color:	Off-White or Black



37610 Ruben Lane Sandy, OR 97055

To order from Bejed, please call: 503-281-8153 or email: [sales@bejed.com](mailto:sales@bejed.com)

[www.bejed.com](http://www.bejed.com)



Made in USA