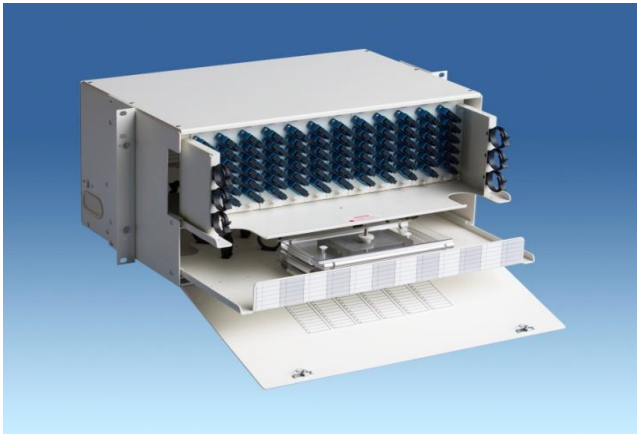




Rack Mount Fiber Optic Distribution Unit

BJ-1984

12 Coupler Plate 5RU Rack Mount



Application

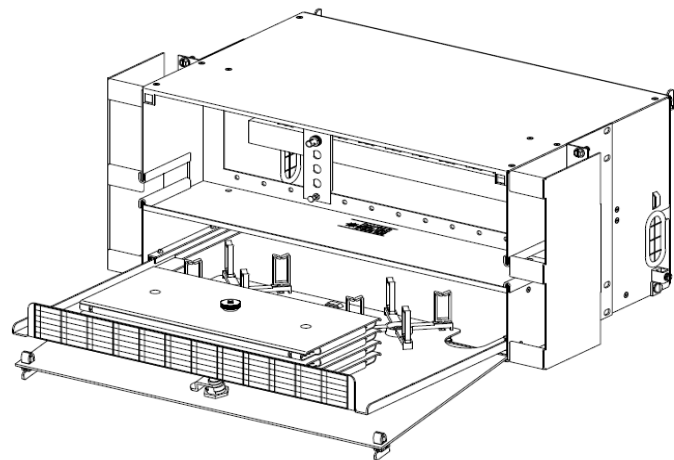
Provides cross-connection and splicing in a single rack unit. Ideal for small Central Office or POP fiber cross connects.

Specifications

Capacity:	Twelve Plates
Dimensions:	8.75"H x 17"W x 11"D
Weight:	22 lbs.
Construction:	Steel
Color:	Off-White or Black

Features

- Terminates up to 288 fibers with LC Quad coupler
- 19 or 23 inch rack mount
- Lower shelf slides out to accommodate splice trays
- Vertical cable management
- Slide out fiber termination shelf
- Aluminum & steel for lightweight design
- Key lock option



Ordering Information

<u>Part Number</u>	<u>Description</u>
BJ-1984F-001	5RU, 12 Plates, Slide-Out Coupler Shelf & Splice Storage White
BJ-1984F-101	5RU, 12 Plates, Slide-Out Coupler Shelf & Splice Storage Black
BJ-1984G-001	5RU, 12 Plates, Key locks, Slide-Out Coupler Shelf & Splice Storage White
BJ-1984G-101	5RU, 12 Plates, Key locks, Slide-Out Coupler Shelf & Splice Storage Black
BJ-1984S-001	5RU Splice Enclosure with Slide-Out access. 20 Splice Tray Capacity, White



845 NW Dunbar, Troutdale, Oregon 97060 503-281-8153

Fax: 503-281-3339 sales@bejed.com www.bejed.com